

Immediate Services

SAFEHOUSE

- 📍 Temporary emergency safe housing for abused women and children in immediate danger
- 📍 Alternative resources available for men
- 📍 Access to all TESSA Advocacy and Counseling programs

CRISIS LINE

- 📍 24 Hour telephone crisis intervention, information, and referral services for domestic violence and sexual assault victims

ADVOCACY

- 📍 Walk-in services at our main office (no appointment necessary)
- 📍 Advocates co-located at El Paso County Citizen's Service Center
- 📍 Assistance with temporary or permanent protection order process at the court house or in our main office
- 📍 Advocacy support for hospitalized domestic violence and sexual assault victims receiving emergency care
- 📍 Advocacy services available in eastern El Paso and Teller counties



Long Term Assistance

COUNSELING

- 📍 Individual counseling for adults and children
- 📍 Psycho-educational Domestic Violence support groups for adults and children and Sexual Assault support groups for adults only
- 📍 Therapeutic recovery groups (Domestic Violence and Sexual Assault)

CHILDREN'S PROGRAM

- 📍 Individual assessment and case management for children impacted by domestic violence
- 📍 Children's recreation and education group activities



Prevention

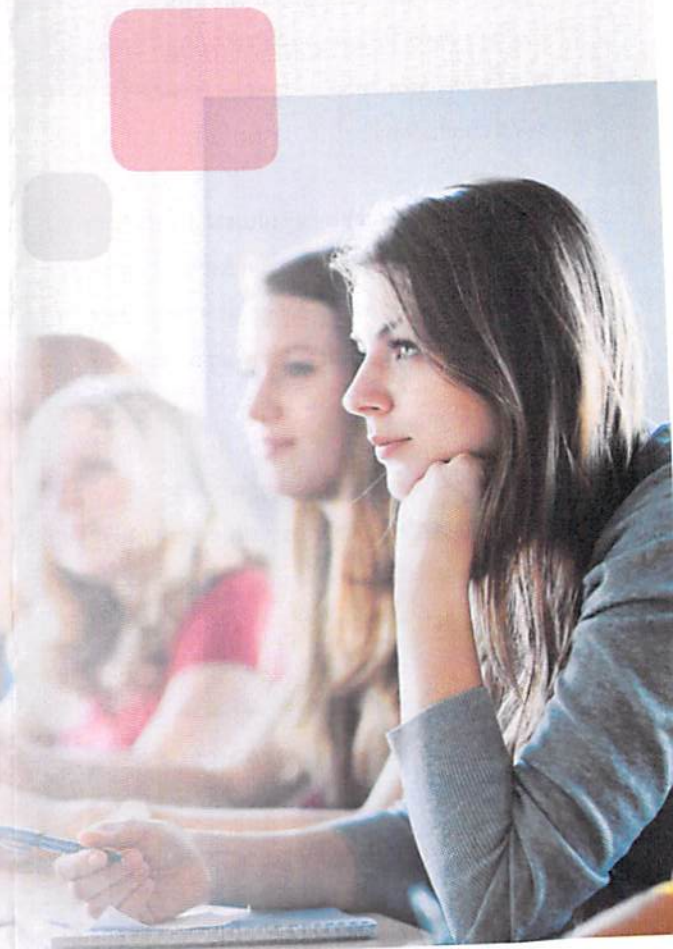
VOLUNTEER PROGRAM

- 📍 45 hour volunteer advocacy training offered three times per year.
- 📍 Trained volunteers select assignments from a range of TESSA needs and programs

Community Engagement

OUTREACH

- 📍 Educational programs for local schools, businesses, faith-based groups, partner agencies, and civic groups
- 📍 Survivor guest speakers
- 📍 TESSA delivered curriculum focusing on teen dating violence, healthy versus unhealthy relationships, and bystander intervention



Introduction

Through our safehouse, advocacy, and counseling programs, as well as outreach and education, TESSA strives to realize our vision of a safe community free of personal violence for all. Donations from generous community supporters make it possible for TESSA services to be free of charge, or available on a sliding scale.

TESSA firmly supports victims' rights to confidentiality in all areas of our work. Per Colorado Revised Statute (13-90-107(k)), TESSA must hold all information related to service provision confidential.

TESSA endeavors to embrace cultural diversity in all aspects of our work. While domestic violence and sexual assault impact women at a far higher rate, we also provide services to men and all members of the LGBTQ community.

Domestic Violence is: A pattern of abusive behavior used by the abuser to gain or maintain control over the victim. Abuse can be: physical, emotional, sexual, economic.

Sexual Assault is: Any type of sexual activity that you do not agree to including: inappropriate touching, rape or attempted rape.

24 HOUR CRISIS LINE: 719-633-3819

GENERAL INFO: 719-633-1462

FAX: 719-632-2342

MAILING ADDRESS:

PO BOX 2662
Colorado Springs, CO 80901

MAIN OFFICE:

435 Gold Pass Heights
Colorado Springs, CO 80906
Monday through Thursday
7:30am to 4:30pm
Friday
7:30am to 12:00pm

COURT SUPPORT:

El Paso County Courthouse
270 South Tejon Street
Colorado Springs, CO 80903
Room 101
Monday through Friday
8:00am to 10:00am
Temporary Protection Order
Courtrooms



www.tessacs.org



*Building a community
without domestic
and sexual violence.*